



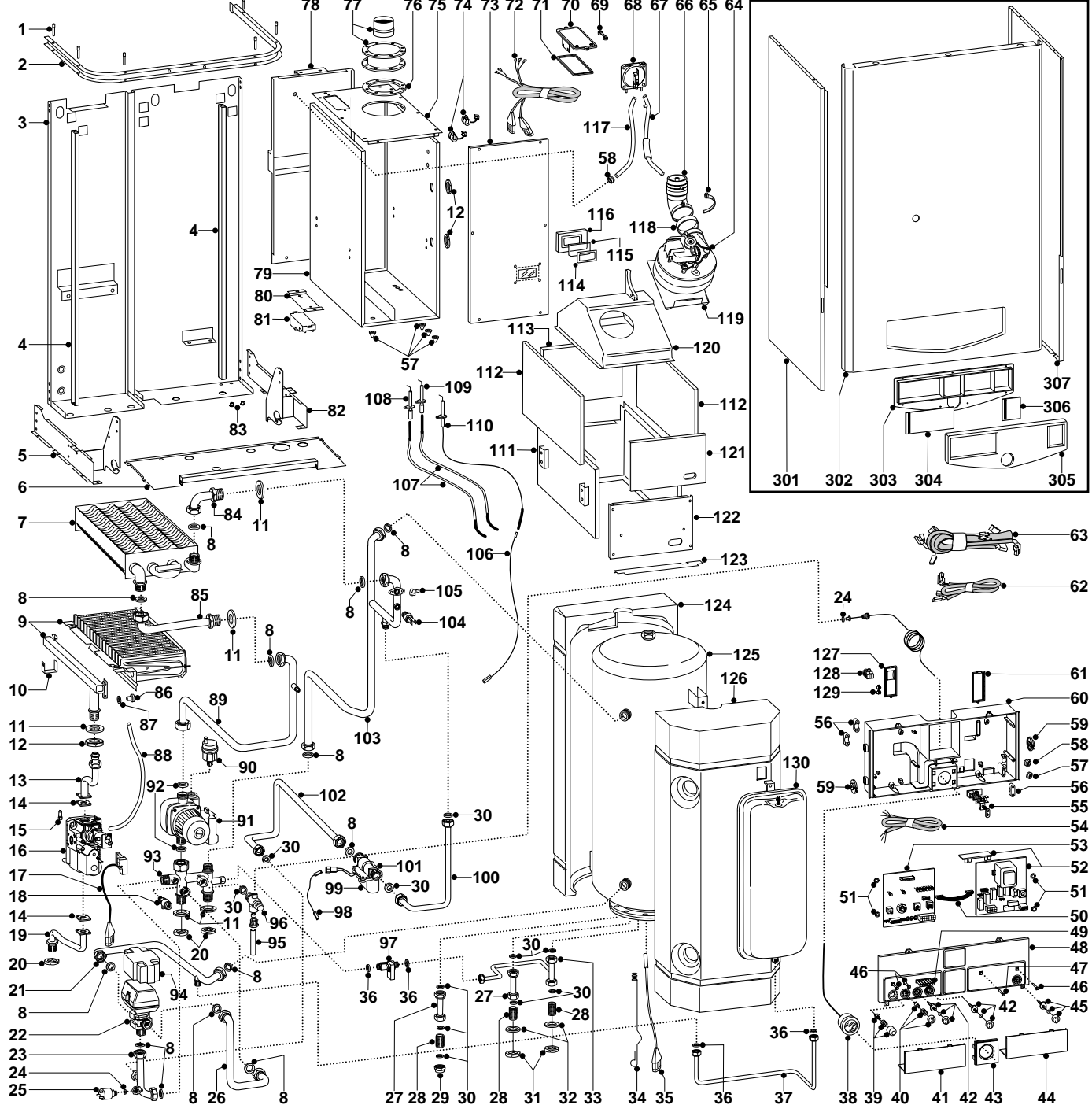
SPARE PARTS EXPLODED VIEW
GAS WALL BOILERS

Models

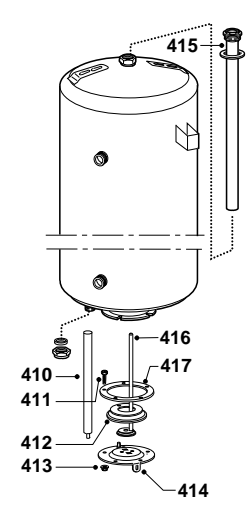
GENUS 27 BFFI

Edition 1 of 1 February 1998

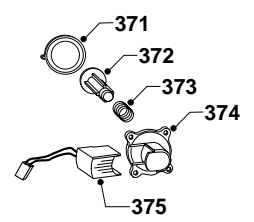




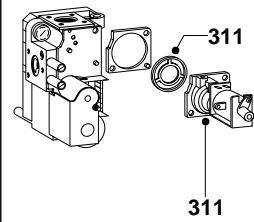
cod. 467290



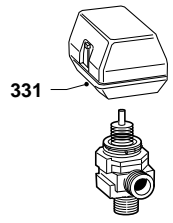
cod. 573224



cod. 571158



cod. 573455



MODELS	CHARACTERISTICS	SERIAL NO: VALIDITY	REF.
GENUS 27 BFFI	METHANE	971117145	A
GENUS 27 BFFI	LPG	971117530	B

PART.	CODE	DESCRIPTION	REF.	NOTE
1	570603	Pivot		
2	573316	Casing support bracket		
3	-----	Boiler frame		11
4	573106	Case panel support (L.H. + R.H.)		
5	573104	Left holder control panel bracket		
6	573185	Cover plate (underside)		
7	573435	Main heat exchanger		
8	573520	Gasket 3/4"		
9	572625	Main burner (Natural gas)	A	
9	572626	Main burner (L.P.G.)	B	
10	573124	Main burner support		
11	569413	Silent washer 37x26x2		
12	569446	Brass lock nut 3/4"		
13	572738	Pipe (gas valve to burner)		
14	569254	Gas valve gasket		
15	573793	Valve control pressure intake		
16	571158	VK gas valve without pilot burner outlet		
17	573342	Wired rectifier		
18	573727	Manual vent cock		
19	573057	Pipe (gas inlet)		
20	573523	Lock nut 3/4"		
21	570581	Pipe (motorised valve to cylinder)		
22	573455	Motorized valve body		
23	573090	Pipe (motorised valve outlet)		
24	569390	Gasket 1/4"		
25	570605	Pump pressure switch		
26	570576	Pipe (motorised valve inlet)		
27	573187	Pipe (secondary return)		
28	573531	Brass nipple 1/2"		
29	570571	Brass cap 1/2"		
30	573528	Gasket 1/2"		
31	573530	Lock nut 1/2"		
32	569415	Gasket 30x22x2		
33	573350	D.W. inlet pipe		
34	570542	D.H.W. probe spring		
35	573015	Temp probe (D.H.W.)		
36	573521	Gasket 3/8"		
37	570587	Pipe (expansion vessel C.H.)		
38	571649	Pressure gauge		
39	571982	Reset button		
40	571983	Summer/winter selector knob		
41	571627	Inspection cover L.H.		
42	571984	Control knob kit		
43	572384	Pressure gauge surround		
44	571623	Inspection cover R.H.		
45	571985	On/off knob		
46	571550	Power indicator L.E.D.		
47	572658	Flue L.E.D. cover (gree)		
48	572674	Control panel cover		
49	571551	Temperature L.E.D. bank		
50	952610	P.C.B. cable		
51	569711	Nylon bush 10mm		
52	952930	P.C.B. EA FFI		
53	953082	P.C.B. EB C MI/MFFI		
54	573335	Main power supply cord		
55	-----	Terminal board		11
56	571562	Cable clamp		
57	569458	Cable holders silicone D.2		
58	573534	Cable holder D.75		
59	571558	Control panel rotor		
60	572993	Control panel (rear)		
61	571967	Cable cover (R.H.)		
62	573374	Low voltage wiring		
63	573196	Connection cable for divertor valve, circulator, gas valve		
64	573434	Fan		

PART.	CODE	DESCRIPTION	REF.	NOTE
65	569434	Venturi collar		
66	572382	Venturi device		
67	571819	Silicone pipe (negative signal)		
68	571652	Air pressure switch		
69	573329	Pressure gauge pressure intake cover		
70	573332	Air pressure switch support plate		
71	572643	Air pressure switch support plate gasket		
72	573193	Cable (fan/air pressure switch)		
73	573114	Sealed chamber from panel		
74	570561	Fan power supply cord clamp		
75	573103	Sealed chamber cover		
76	573447	Neoprene gasket 95x128mm		
77	571166	Coaxial flue turret		
78	572856	Sealed chamber rear cover		
79	-----	Sealed chamber		11
80	573493	Spark generator support bracket		
81	573023	Igniter		
82	573105	Right holder control panel bracket		
83	570772	Cable holder		
84	570585	Pipe (flow - main exchanger)		
85	570584	Pipe (return - main exchanger)		
86	570248	Burner jet 1.25mm	A	
86	570251	Burner jet 0.72mm	B	
87	572138	Burner jet washer		
88	573576	Compensation tube		
89	572716	Pipe (pump to main heat exchanger)		
90	564254	Automatic air release valve		
91	570487	Oversize circulator with deaerator		
92	569387	Gasket 1"		
93	573449	Hydraulic group		
94	572858	Cover (motorised valve)		
95	-----	Safety valve exhaust pipe		11
96	569292	Safety valve 3 bar		
97	573543	3/8" M-M tap		
98	573093	Pump pressure switch cable		
99	573224	Group circulator consent pressure gauge		
100	572718	Pipe (main flow switch positive)		
101	572728	By-bass body		
102	572719	Pipe (main flow switch negative)		
103	572717	Pipe (main circuit)		
104	569236	Temp probe (C.H.W.)		
105	571648	Overheat thermostat		
106	571657	Cable (detection electrode/P.C.B.)		
107	573440	Cable (ignition electrode)		
108	569561	Ignition electrode (L.H.)		
109	569560	Ignition electrode (R.H.)		
110	573441	Detection electrode		
111	570515	Combustion chamber		
112	573443	Side insulation panel		
113	573445	Back insulation panel		
114	569442	View window seal		
115	573567	View window glass		
116	573566	View window holder		
117	571575	Silicone pipe (positive signal)		
118	573446	Fan seal (silicone)		
119	573049	Fan support plate		
120	570516	Flue hood		
121	573444	Front insulation panel		
122	570553	Panel (combustion chamber front)		
123	573113	Air diffuser		
124	570534	Cylinder polyurethane shell (rear)		
125	467290	D.H.W. cylinder 50 L		
126	570535	Cylinder polyurethane shell (front)		
127	571968	Cable cover (L.H.)		
128	573091	Three pole terminal board		

PART.	CODE	DESCRIPTION	REF.	NOTE
129	569720	Blind grommet		
130	573456	Expansion vessel (C.H.)		
301	573141	Panel (L.H. side)		
302	572733	Panel (front case)		
303	572404	Reverse plate		
304	572405	Regulation door		
305	572403	Plate		
306	572406	On/Off door		
307	573142	Panel (R.H. side))		
311	571479	Gas valve coil		
331	570711	Motorised valve motor		
361	569281	Burner jet 1.25 full kit (Natural gas)		12
362	569282	Burner jet 0.72 full kit (LPG)		12
371	571547	Main flow switch membrane		
372	571772	Main flow switch magnet		
373	571771	Main flow switch spring		
374	571770	Main flow switch top cap		
375	573138	Main flow switch reed system		
410	469001	21x350mm M6 magnesium anode		
411	469216	Screw M8x23		
412	469068	98x37mm gasket with hole		
413	469495	M8 hexagonal nut		
414	469120	Flange plate		
415	570439	Boiler anode		
416	469582	Shealth with flange L=250mm		
417	990020	Gasket with 8x23 screw		

NOTE	DESCRIPTION
11	Not supplied as a spare part
12	Not illustrated